

Model


3909

EVSTM

cyclonic
bagless

The Power Unit, 'the heart of the ducted cleaning system' is constructed only with Quality Materials and Workmanship, assuring years of trouble free vacuuming.

Power Unit Features

- ✓ Injected molded from high impact, high temperature ABS polycarbonate and polypropylene plastics,
 - ✓ - provides greater strength and durability.
 - ✓ - will not dent and will last a house time.
 - ✓ - rust and corrosion proof.
 - ✓ - excellent for areas where there is excessive humidity and ideal for coastal areas.
- ✓ Right & Left Entry points for connection of ducting pipe to unit.
- ✓ Cyclonic Filtration System utilising HFPC filter for added motor protection.
- ✓ Also offering Dual Filtration Compatibility; allowing optional Disposable Filter bag to be fitted if required with Bag Conversion Kit.
- ✓ Large capacity dirt receptacle easily emptied by releasing two clamping latches that provide a hermetic vacuum seal between motor base housing and dirt receptacle.
- ✓ Single printed circuit board control module complete with,
 - ✓ - on/off switch for operating inlet point on power unit.
 - ✓ - terminals for extra low voltage remote connections for inlet points inside house.
 - ✓ - IEC type socket and lead for power mains connection.
 - ✓ - dual LED technology status indicators for visual standby and operating modes.
- ✓ Manufactured to meet with all relevant Electrical Safety Standards in Australia and complies with the EMC emission standard AS/NZS 1044. Power units are all marked with the approved marking,  logo, and registration number N1461.
- ✓ Powered by High Efficiency Ametek 3 Stage 183mm Turbine By-pass Industrial grade vacuum motor.
- ✓ Tangential discharge of outgoing air allows unit to be fitted with Silencer for added exhaust noise reduction and allows for venting to outside for 100% filtration.



Model

3909

EVSTM

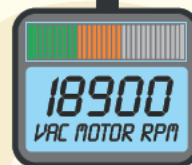
SPECIFICATIONS

Model	3909
Vacuum Motor Specifications	
Tangential By-pass discharge	•
Flow Through discharge	
Double ball bearings	•
Diameter of Motor mm	183
Air Watts	610
Airflow l/s (max.)	49
Sealed Vacuum mm H ₂ O (max.)	3750
RPM @19mm working orifice	18900
Label Rated Electrical Watts	1800
Noise Level dbA with Silencer @ 3m	70.5
Temperature Sensitive Thermal Protector	
Control Circuit 12 V DC	•
Control Current 100mA	•
Nominal Voltage 240 V AC	•
Nominal Frequency 50 Hertz	•
Power Unit Physical Specifications	
Overall Height (mm)	840
Overall Diameter (mm)	310
Overall Weight (kg)	9.5
Dual Filtration Compatible System	•
Cyclonic Filtration (Standard)	•
HFPC Filter Cartridge	•
Filter Bag Filtration	
Silencer for Exhaust	•
Left & Right ducting entry points	•
Direct Inlet point with On/Off switch	•
Wall Mounting of Power Unit	•
Body Housing Construction	ABS
Dirt Capacity litres	25

Specifications Subject to Change without Notice

Available from,

183mm Base Turbine
3 Fan Stages
METEK
Quality Motor Inside



electron
Est. 1981 Vacuum Systems
(Aust) Pty Ltd
www.evsaust.com.au

CLEANER LIVING

VER0210VAC3909



E.O.& E. Printed in Australia ©